

## Unmanned Solar Panel Cleaning Robot



## Specification

The Effect of Resin-free on Washability, Speed

The Effect of Resin-free on Washability, Speed

The Effect of Resin-free on Washability, Speed

Adjustable guide rail module

High-speed rotating brush

Strip brush to remove debris

Battery and wireless communications

Travel motor

Lightweight and corrosion-resistant protective case

Brush motor

Battery automatic charging/docking system

## Product Technology

Wash Cover Technology

Mobile Solar Panel Automatic Resin Removal Technology

Electrolytic Resin Removal Technology

Resin-free and Resin-free Resin-free

## Company Overview

**RESET**  
Resin-free & ESG Consulting

**CEO**  
Seongjae Jeong

**Number of Employees**  
30

**Phone**  
+82 31 8962 0014

**Establishment Date**  
2016. 9. 20

**Main Business**  
Robot R&D, Electrolytic Solar Panel Recycling, ESG Consulting

**E-mail**  
sales@resetnow.com

**R&D Research Center**  
398-41, Sim-dong, Yeongdeungpo-gu, Seoul, Republic of Korea

**Recycling Center**  
87, Ojeon 5-ro, Cheongju-si, Chungcheongbuk-do, Republic of Korea

**Japan office**  
7F, Nakae Hommachi Bldg, 4-1-10, Hibiya, Minami-ku, Osaka, Japan

**Robot R&D**  
Development of Resin-free Robot, Development of Resin-free Robot, Development of Resin-free Robot

**ESG Consulting**  
ESG Consulting, ESG Consulting, ESG Consulting

Reset Company is South Korea's representative company that takes the lead in making a sustainable energy production and resource utilization system by taking the lead in the development of resin-free solar panel recycling, which is the core of the global zero-carbon era, and the essential case of green growth in the era of climate change. It is an innovative company.

Start Lead Quality

Star Quality

www.resetnow.com

## Unmanned Solar Panel Cleaning Robot



## Automated Solar Panel Recycling System



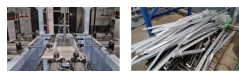
## Automated Solar Panel Recycling System



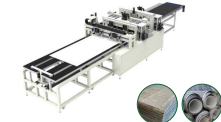
### Integrated solar panel frame separation equipment



Contents	Description
Model Name	RT-HD400H
Required Space (mm)	11,100(W) x 3,670(D) x 3,630(H)
Operational Temperature	0 ~ 40°C
Operation Methods	Servo Motor, Pneumatic Cylinder, Vacuum Adsorption
Power Usage (kW)	13kW
Minimum Panel Size (mm)	L 1,500mm x W 750mm
Maximum Panel Size (mm)	L 2,500mm x W 1,300mm
Panel Frame Thickness (mm)	30 ~ 60
Separation Speed (sec)	~ 60
Overall Process Speed (sec)	~ 120
Hydraulic Pressure Specification	0.8Mpa, 500L or more, 50Hp



### Solar panel tempered glass separation equipment



Contents	Description
Model Name	RT-G0300
Required Space (mm)	8,608(W) x 2,104(D) x 1,730(H)
Gross Weight (kg)	5,700 +/-
Operational Temperature	0 ~ 40°C
Operation Methods	Pneumatic Cylinder, Hot/Wire
Power Usage (kW)	52kW
Minimum Panel Size (mm)	L 1,500mm x W 750mm
Maximum Panel Size (mm)	L 2,500mm x W 1,300mm
Separation Speed (sec)	~ 240
Hydraulic Pressure Specification	0.8Mpa, 1000L or more, 50Hp



## Upcoming Solar Panel Waste Problem

By reducing the amount of discarded solar waste, we create environmental, social, and economic impacts. Power generation companies reduce processing costs by reducing the waste through Reset's panel separation equipment, and recyclers generate additional profits by recycling clean materials. We provide a win-win environment for both power generation companies and recyclers.

